

Canine PD1 Protein; hFc Tag

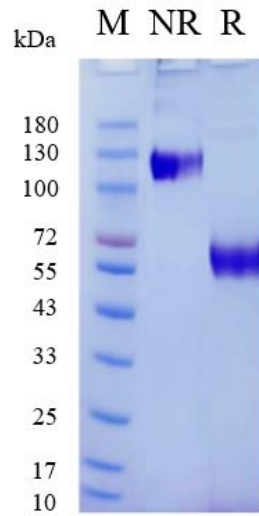
Product Information

Product Name	Canine PD1 Protein; hFc Tag
Storage temp.	Store at $\leq -70^{\circ}\text{C}$, stable for 6 months after receipt. Recommend to aliquot the protein into smaller quantities for optimal storage. Please minimize freeze-thaw cycles.
Catalog# / Size	GM-85001RP-100 / 100 μg GM-85001RP-1000 / 1 mg

Protein Information

Alternative Names	PDCD1,PD1,CD279,SLEB2
Source	Canine PD1 Protein; hFc Tag (GM-85001RP) is expressed from human 293 cells (HEK-293). It contains AA Leu25-Gly168 (Accession # NP_001301026.1). This protein carries a hFc tag at the C-terminus.
Purity	> 95% as determined by SDS-PAGE
Endotoxin	< 1 EU/ μg , determined by LAL gel clotting assay
Predicted Mol Mass	41.2 KDa
Formulation	Supplied as a 0.2 μm filtered solution of PBS, pH7.4.
Description	PD1 (Programmed Cell Death Protein 1), also known as programmed cell death protein 1, is a cell surface receptor that plays a key role in regulating the immune system by inhibiting T cell activation and promoting immune tolerance to maintain immune balance. The PD1 protein is encoded by the PDCD1 gene. In immune responses, PD1 binds to its ligands PD-L1 and PD-L2 to inhibit T cell activation, preventing excessive immune responses and the development of autoimmune diseases. PD1 is also extensively studied for immunotherapy, especially in cancer treatment, to enhance immune responses by blocking the PD1 signaling pathway to achieve therapeutic goals.

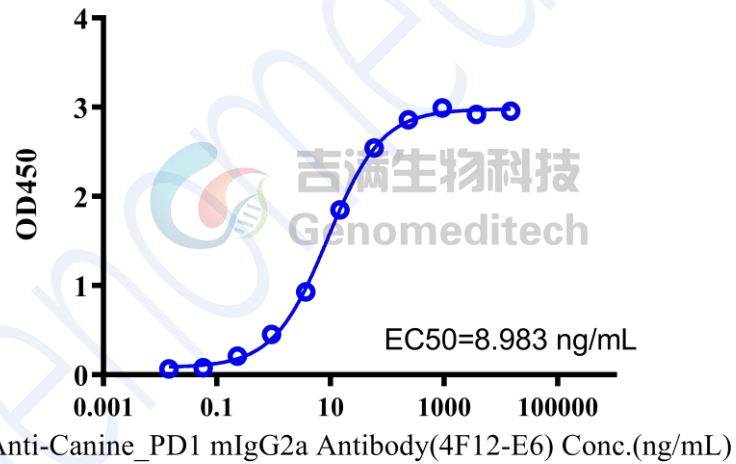
SDS-PAGE



On SDS-PAGE under non-reducing (NR) condition and reducing (R) condition. The gel was stained overnight with Coomassie Blue. The purity of the protein is greater than 95%.

Bioactivity-ELISA

Canine PD1 Protein; hFc Tag ELISA 0.5 μ g Canine PD1 Protein; hFc Tag of per well



Canine PD1 Protein; hFc Tag (Catalog # GM-85001RP) was immobilized at 5 μ g/ml (100 μ L/well). Increasing concentrations of Anti-Canine_PD1 mIgG2a Antibody (Catalog # GM-81957AB) were added.